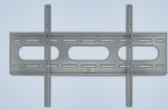




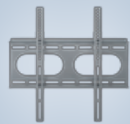
## AmbienTech TV Wall Mount No.1



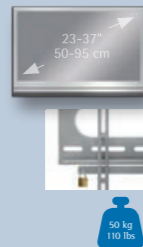
- universal Plasma-/ LCD-Wall Mount
- compatible with VESA standard
- TV size: 37-60" / 95-153 cm
- TV weight: 75 kg / 165 lbs
- with mounting level
- lockable
- extra flat construction
- incl. mounting instruction
- incl. mounting kit
- easy Plug & Play installation



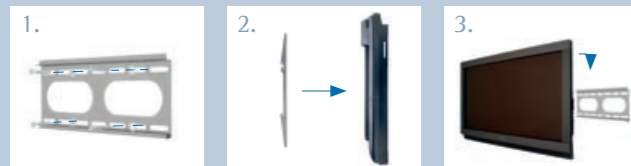
## AmbienTech TV Wall Mount No.2



- universal Plasma-/ LCD-Wall Mount
- compatible with VESA standard
- TV size: 23-37" / 59-95 cm
- TV weight: 50 kg / 110 lbs
- lockable
- extra flat construction
- incl. mounting instruction
- incl. mounting kit
- easy Plug & Play installation



### Plug & Play installation



### AMBIENTECH TV WALL MOUNT

ITEM NO.	DESCRIPTION
002606075	AmbienTech TV Wall Bracket No. 1 / 37-60" (95-153 cm) / 75 kg
002603750	AmbienTech TV Wall Bracket No. 2 / 23-37" (59-95 cm) / 50 kg



## Plug & Play installation

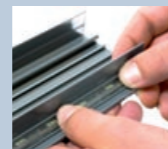
The AmbienTrack TV cable column is characterized by an easy, fast and uncomplicated mounting process. The installation happens in just a few steps. All you need is the mounting kit, included in the scope of delivery, a screwdriver, a water level to align the back profile and a hacksaw to cut out the corresponding cable outlet on the aluminium front cover.



1. Align the back profile and fix it (screw it) to the wall



2. Define and prepare the position of the universal cable outlet



3. Fix the LED-tube in the space of the front panel



4. Lay the cables and click the front panel on



For more information about  
**AmbienTrack**

please visit:  
[www.in-akustik.de](http://www.in-akustik.de)

in-akustik GmbH & Co. KG  
Untermatten 12-14  
79282 Ballrechten-Dottingen  
GERMANY

Tel: +49 (0) 7634 5610-57  
Fax: +49 (0) 7634 5610-80  
E-Mail: [mailto@in-akustik.de](mailto:mailto@in-akustik.de)  
[www.in-akustik.de](http://www.in-akustik.de)

We reserve the right for any changes. Art.-Nnr. 001 00199025

**inakustik**  
KABEL | LAUTSPRECHER | MUSIK

## Exclusive Design AmbienTrack TV Wall Column



**MADE IN GERMANY**

**inakustik**  
KABEL | LAUTSPRECHER | MUSIK

## The trick with the AmbienTrack TV Wall Column

Flat screens impress by a purist design and a clear form. They integrate perfectly in a living room environment. If only there were not all those cables dangling down the wall. An elegant solution for this problem – with a perfect look and appearance – is the new TV-Wall column from in-akustik.

### The problem:

Of course one solution to somehow hide the cables would be to place the components and the Flat TV on a side-board or shelf. However the space saving idea of fixing a flat screen TV on to the wall would be lost and would ruin the whole concept.



### The solution:

With the AmbienTech TV-Wall column in-akustik offers an elegant, practical and especially optically perfect solution. The universal TV-Wall Column allows for a hidden cable laying behind a good looking powder-coated Aluminum front cover – even in various colors.



- TV-wall column for hiding the cables
- Cover made of Aluminium
- Elegantly colored Surface, powder-coated
- Optional background lightning
- Cover can be individually length adjusted
- Cable outlet individually adjustable
- Mounting kit included



**MADE IN GERMANY**

### AMBIENTRACK TV WALL COLUMN

ITEM NO.	DESCRIPTION	COLOR
00110107101	TV-Wall Column, back profile, front cover, mounting kit	black
00110108101	TV-Wall Column, back profile, front cover, mounting kit	silver grey
00110106101	TV-Wall Column, back profile, front cover, mounting kit	white
00110103101	TV-Wall Column, back profile, front cover, mounting kit	orange
00110104101	TV-Wall Column, back profile, front cover, mounting kit	blue

## The LED Light Kit

Light and shade, clear and dark – in interior decoration lighting is an increasingly important factor to provide visual background and contrast in the different light conditions and lighting requirements at different times of the day. All of that changes light into a stylistic element. The shadow gap in the AmbienTrack TV cable column has space for an ultramodern LED technology light strip. Indirect light of the finest quality in different colours makes the TV evening a moving-picture delight.



- LED light tube for the TV-wall column
- 2 x 1.0 m LED light tube (5 x 8 mm)
- 1.5 m A/C power supply connecting cable
- A/C power supply (100–250 Volt)
- Easy Plug & Play installation
- Fully RoHS and CE conform
- Power consumption: 2 x 2.16 Watt/meter
- Modern high-tech energy saving LED technology



### AMBIENTRACK LED LIGHT KIT

ITEM NO.	DESCRIPTION	COLOR
002700020621	LED light kit, 2 x 1.0 m	white
0027000206121	LED light kit, 2 x 1.0 m	warm-white
002700020421	LED light kit, 2 x 1.0 m	blue